

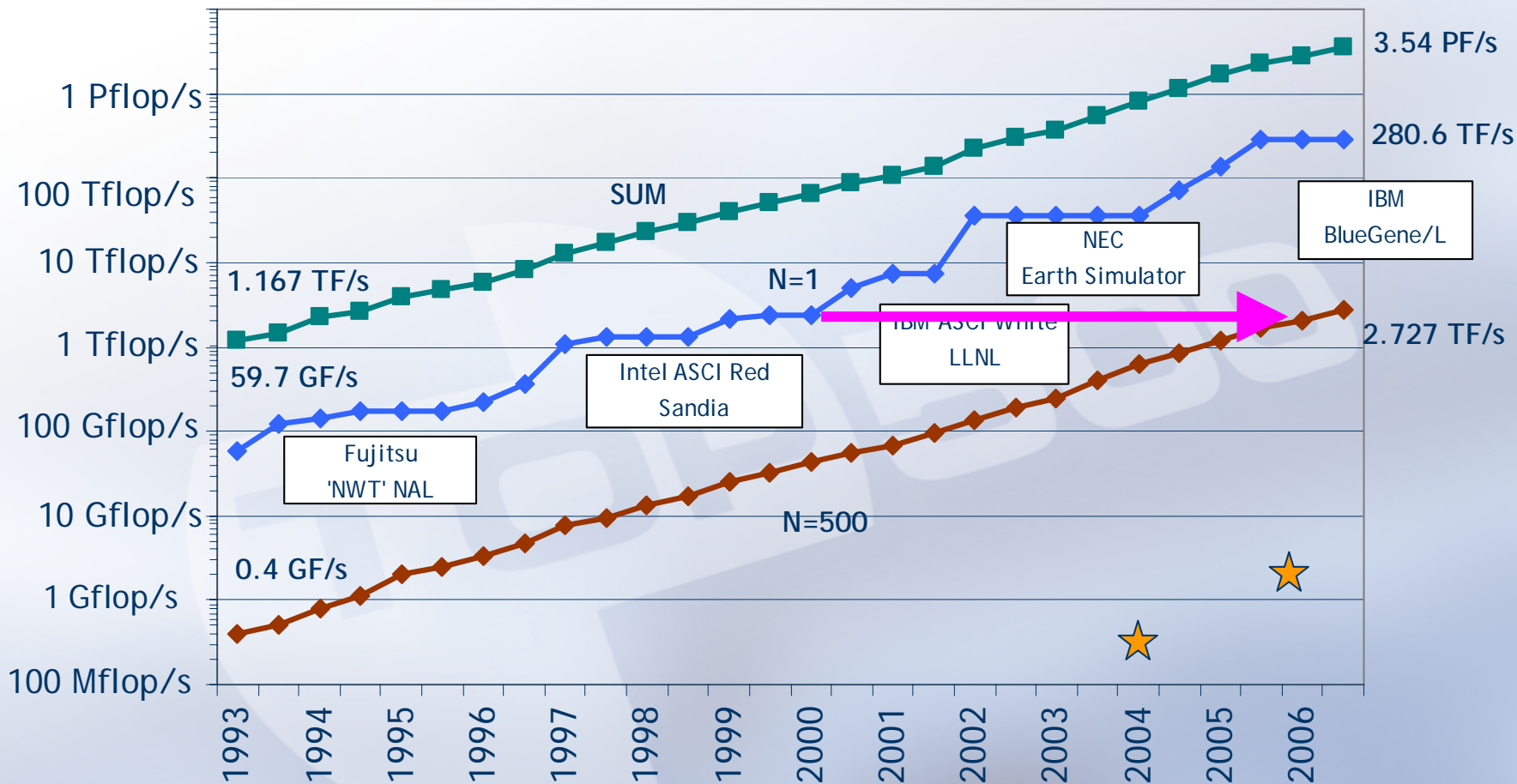


## 28th TOP500 List

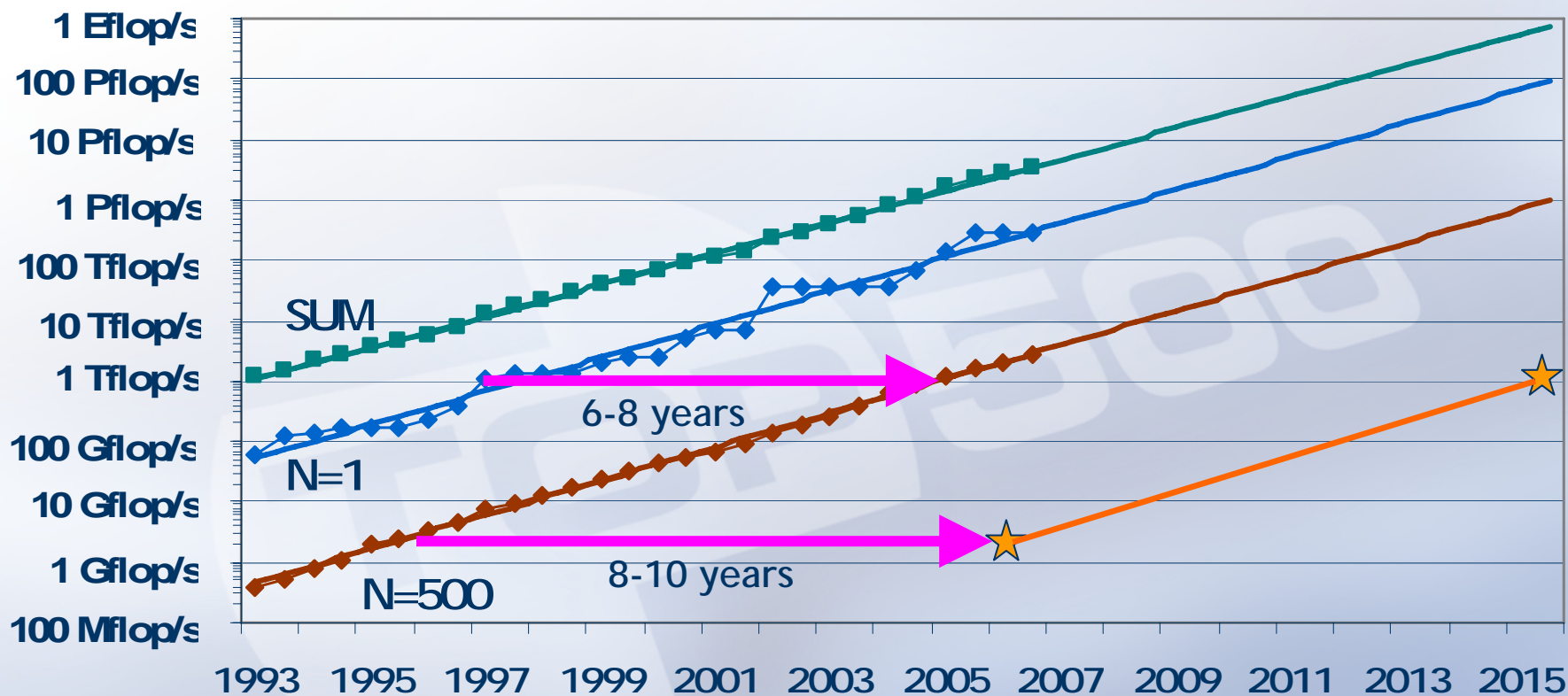
SC06 Conference, Tampa, FL, November 14, 2006

- 1. Welcome and Introduction (H.W. Meuer)
- 2. TOP10 and Awards (J.J. Dongarra)
- 3. Highlights of the 28<sup>th</sup> TOP500 (E. Strohmaier)
- 4. HPC Power Consumption (J. Shalf, D.H. Bailey)
- 5. HPC Challenge Benchmarks and the TOP500 (Dongarra)
- 6. Discussion

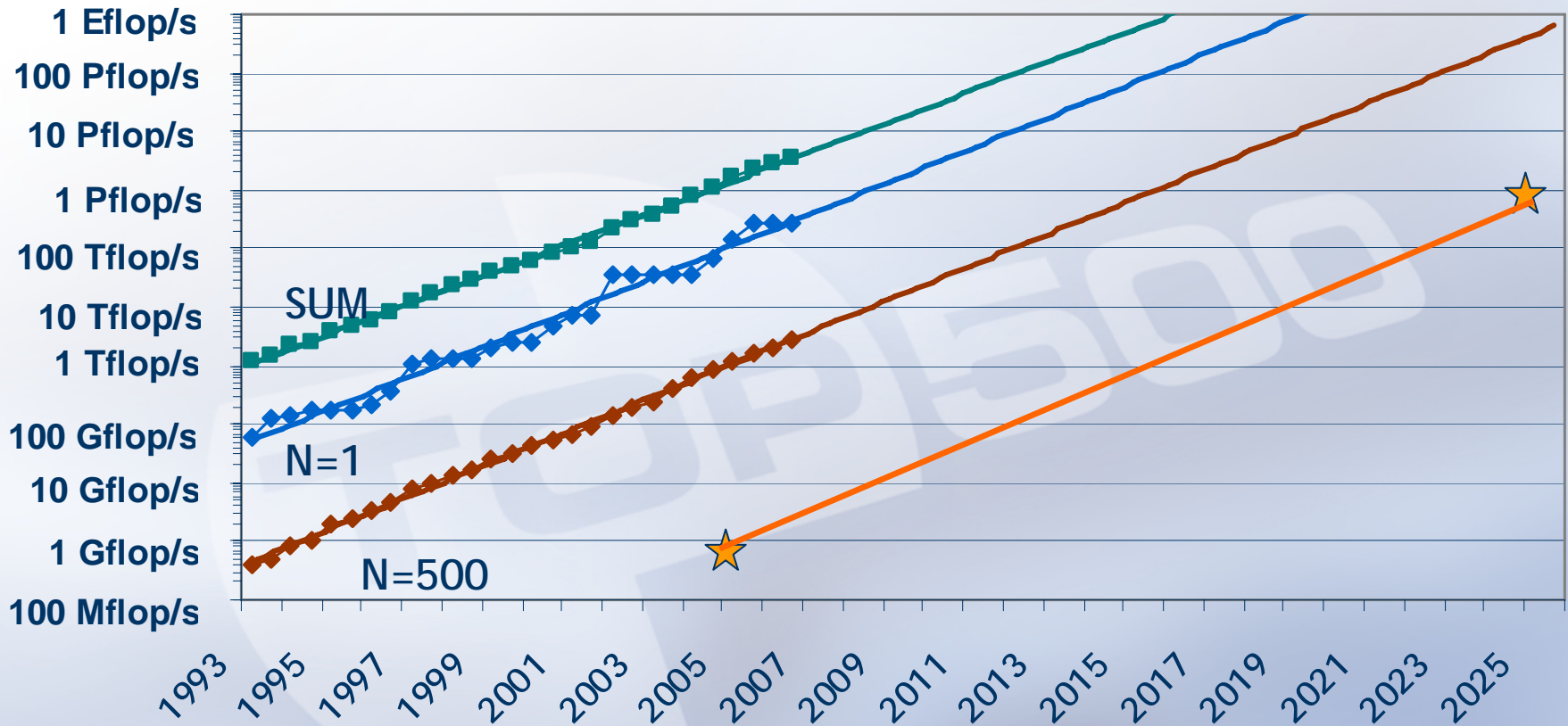
# Performance Development



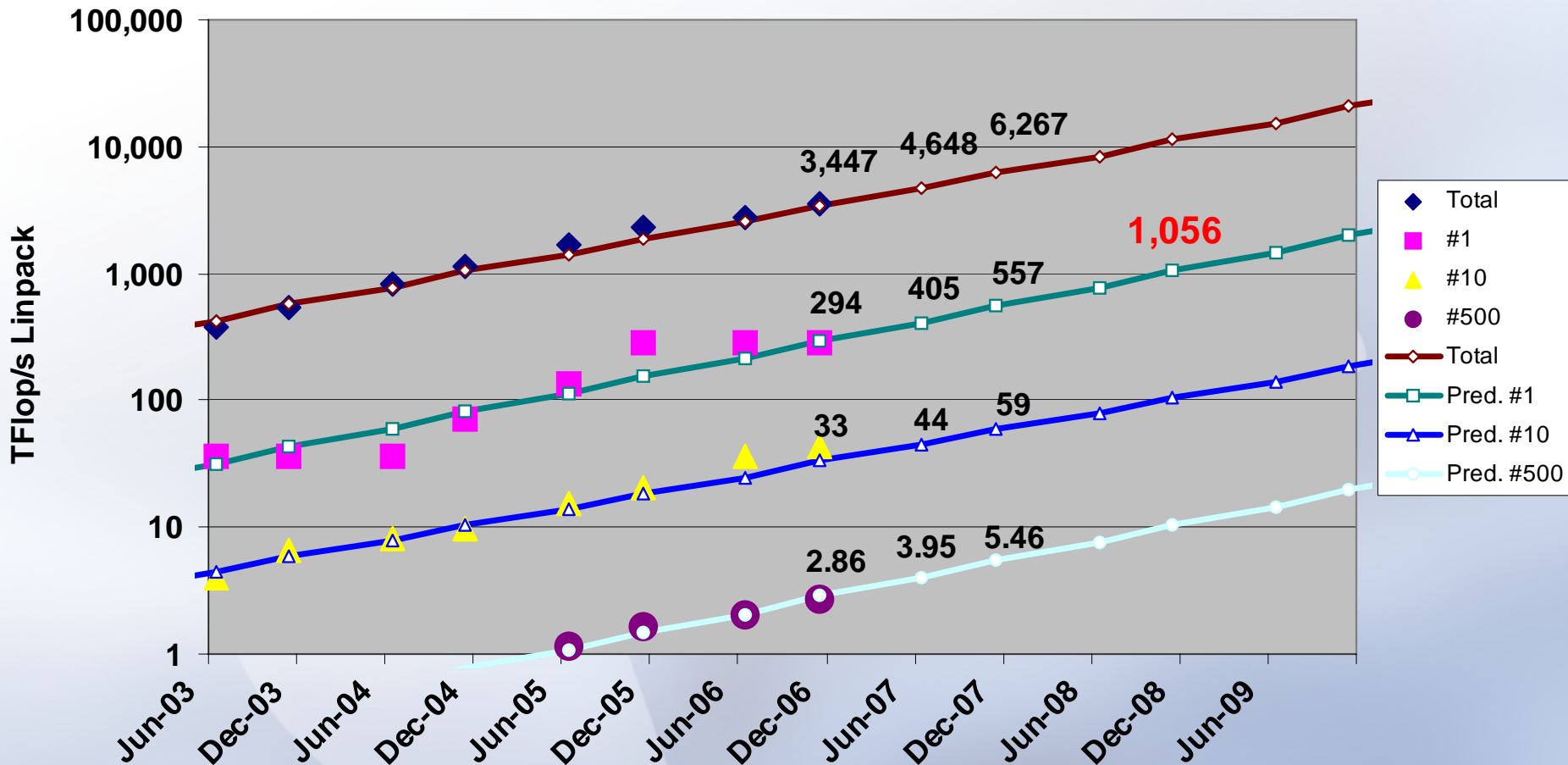
# Performance Projection



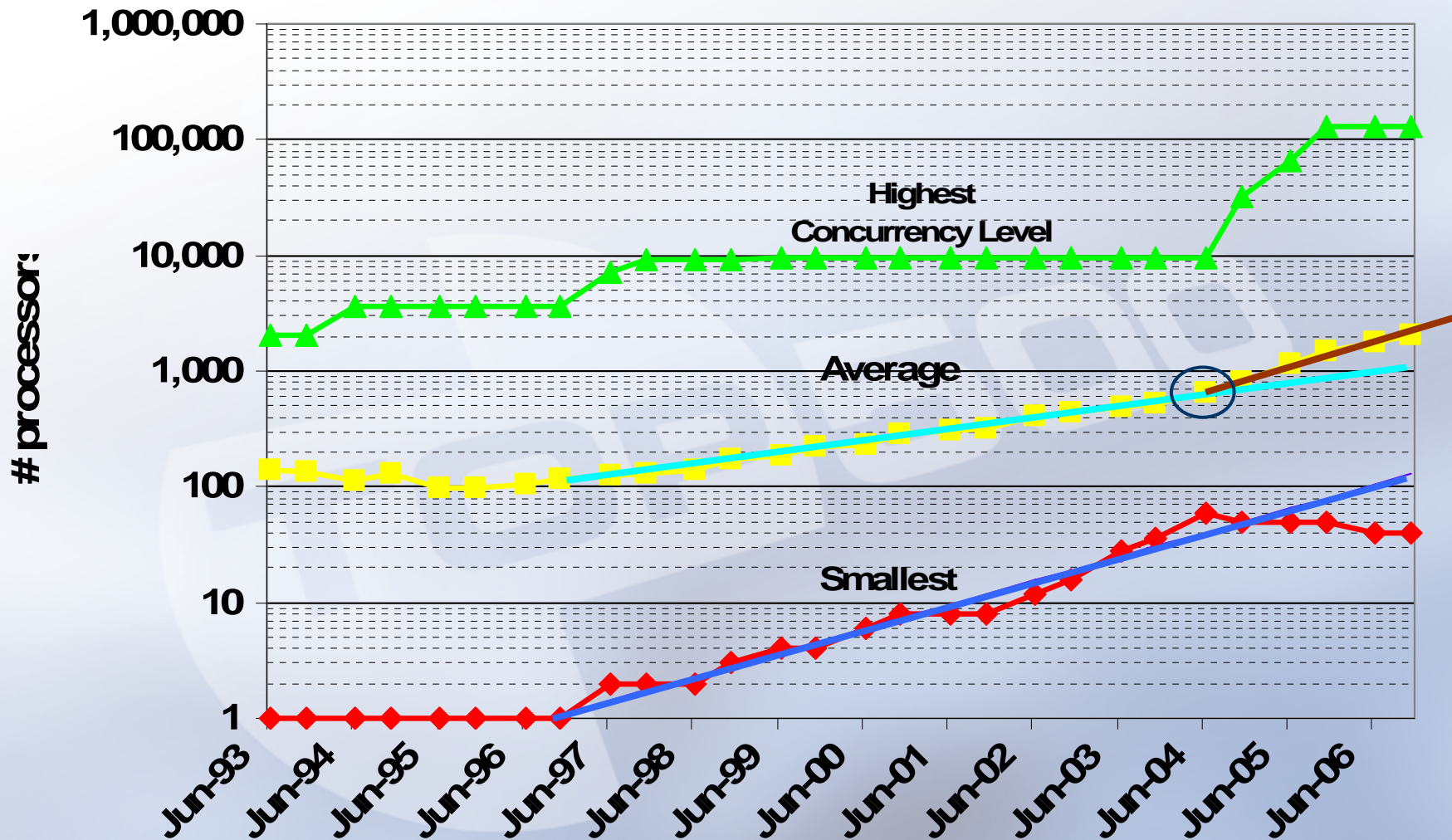
# Performance Projection



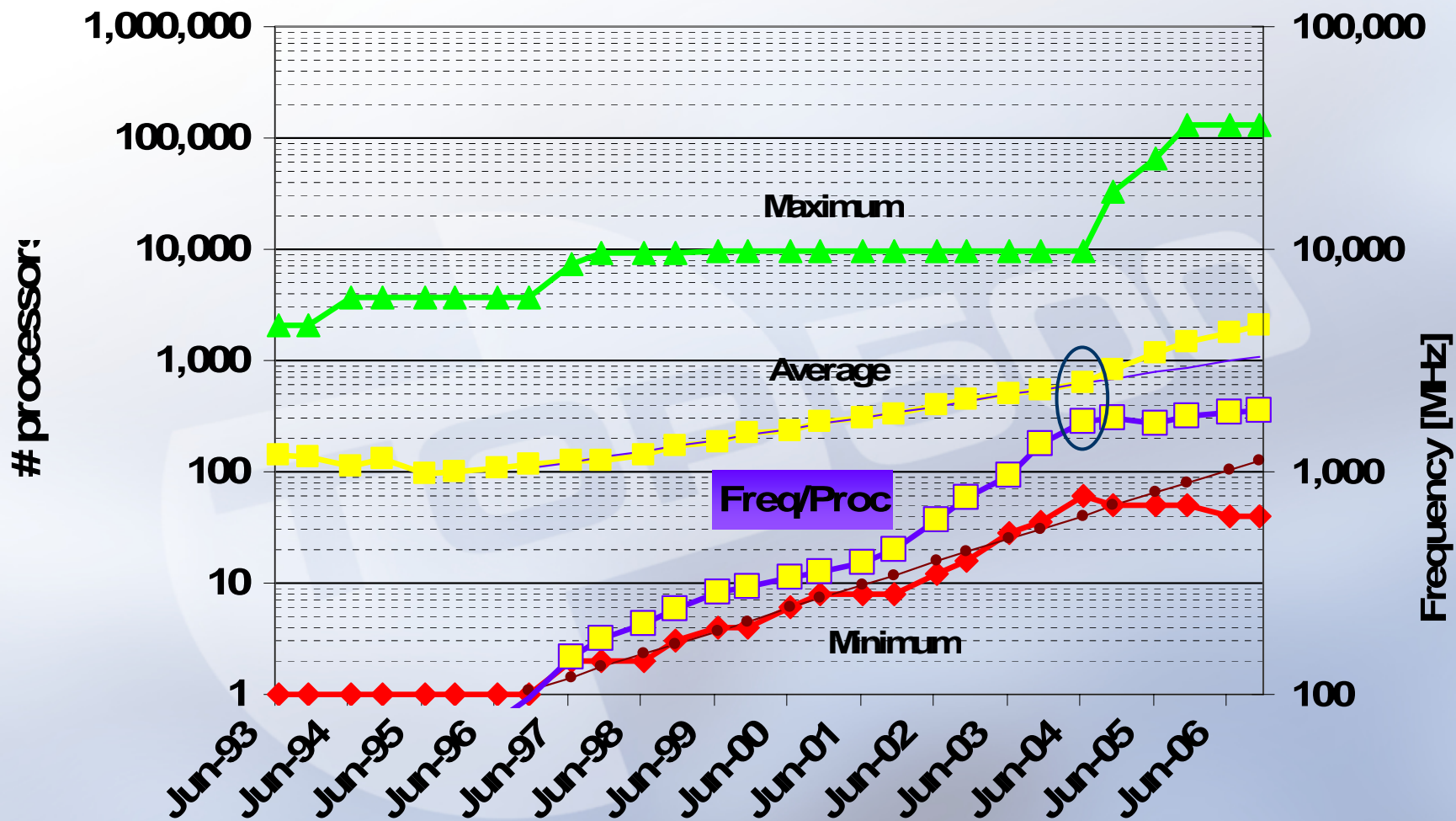
# Predicted Performance Levels



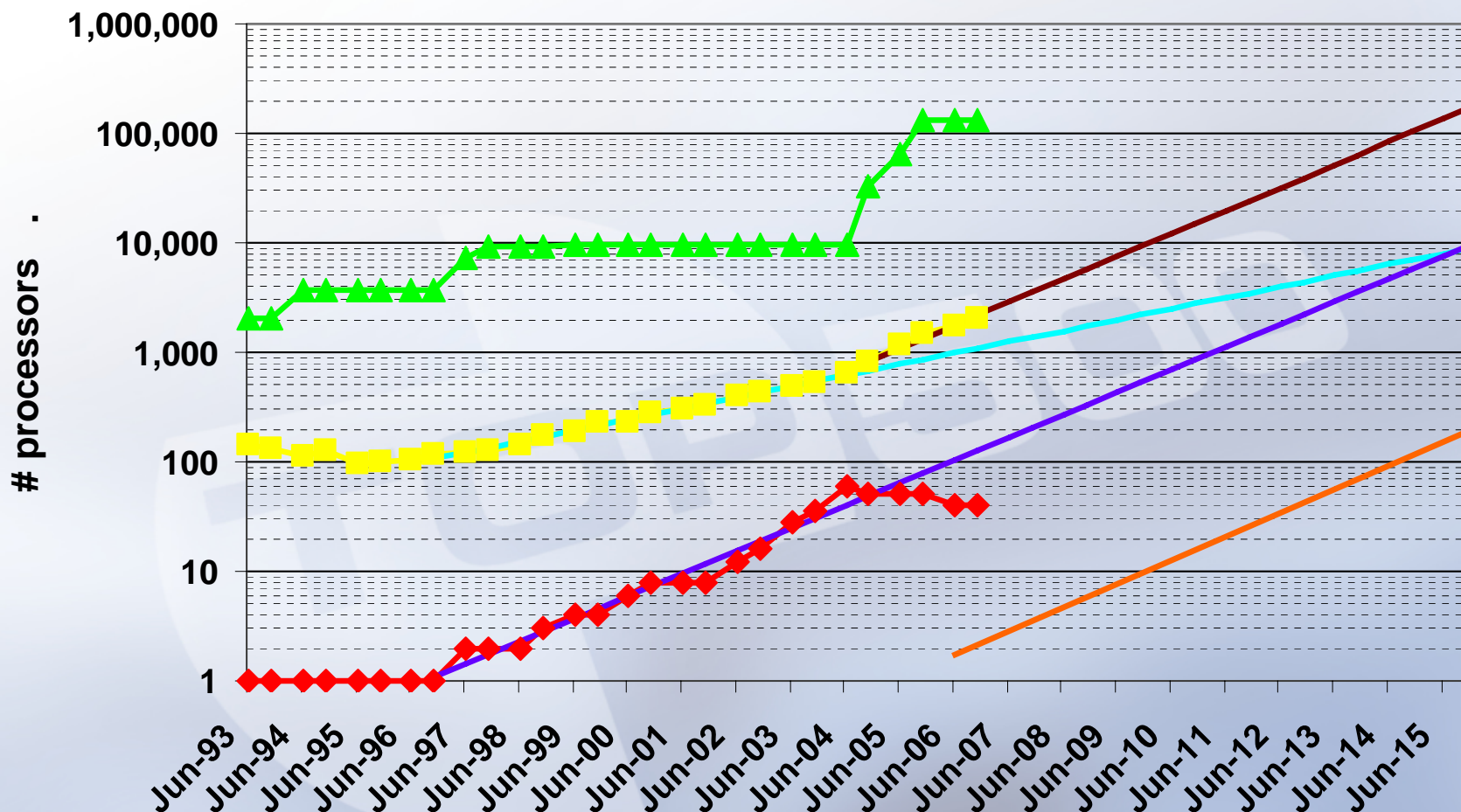
# Concurrency Levels



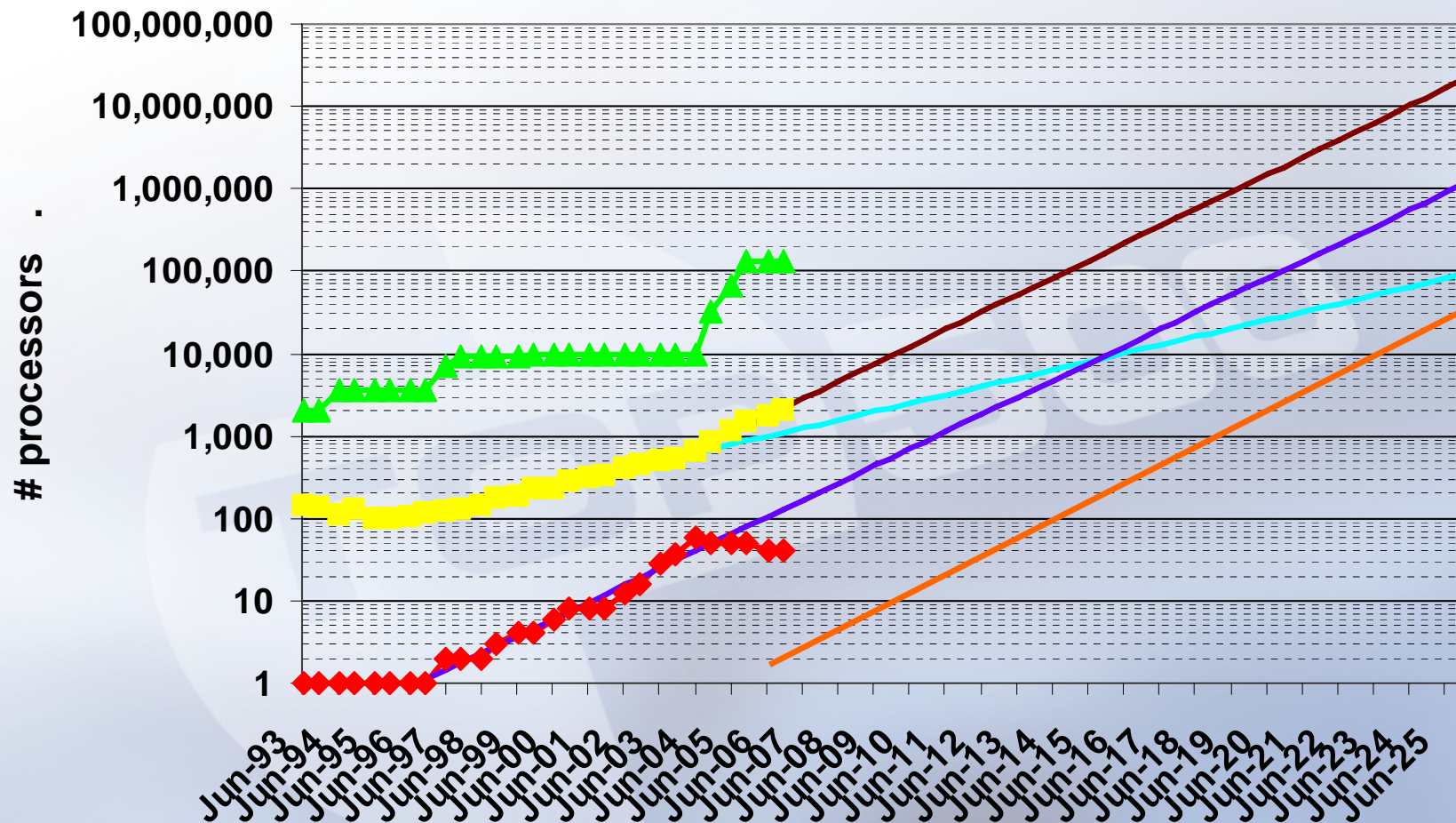
# Concurrency Levels



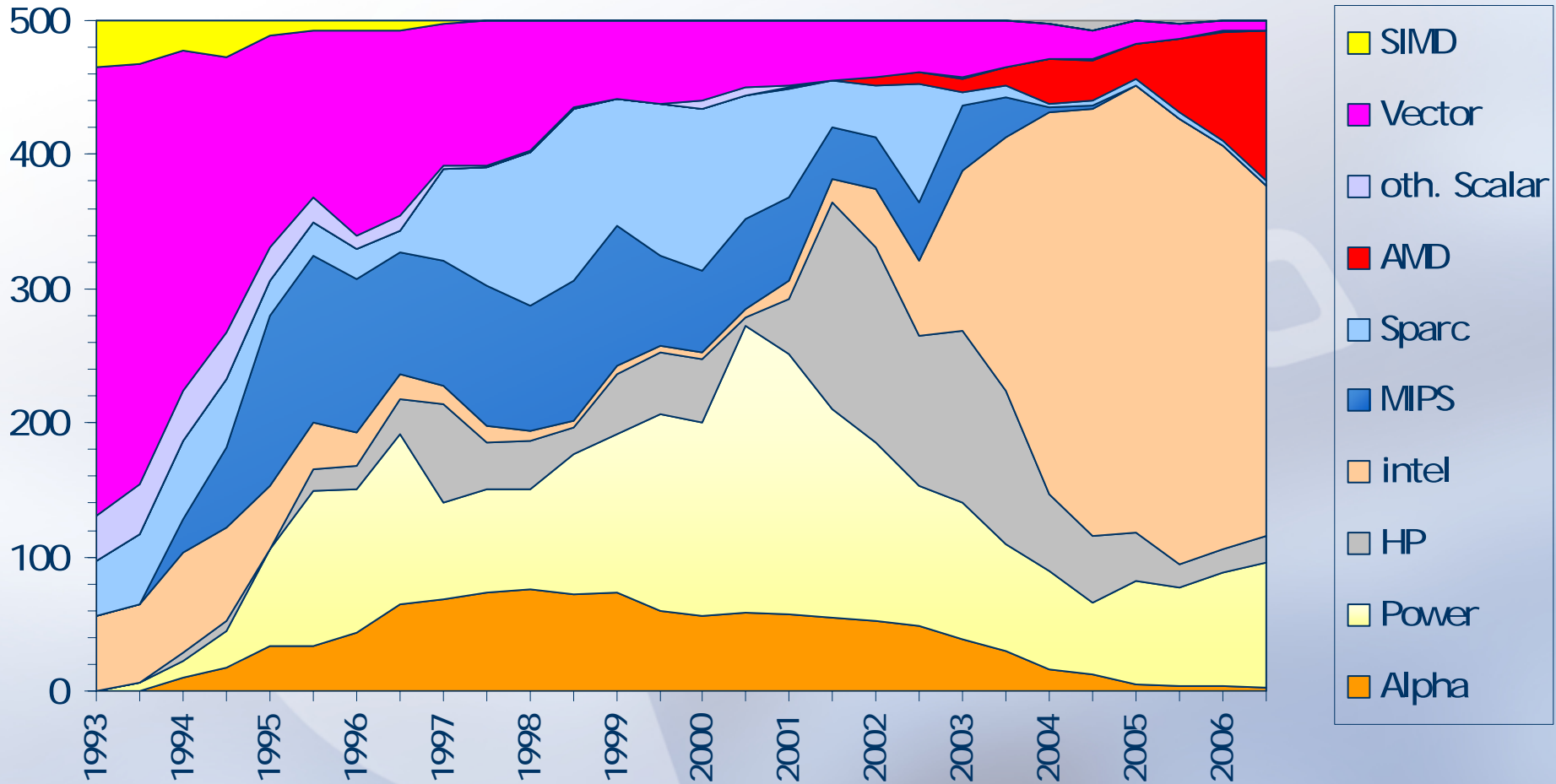
# Concurrency Levels

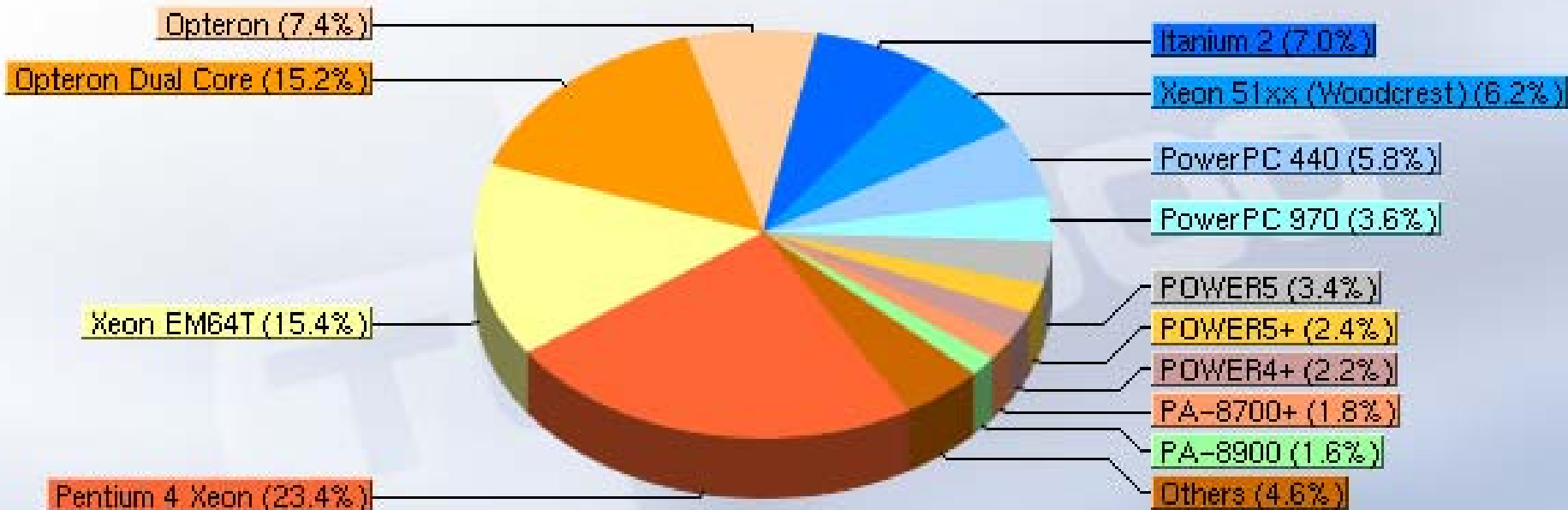


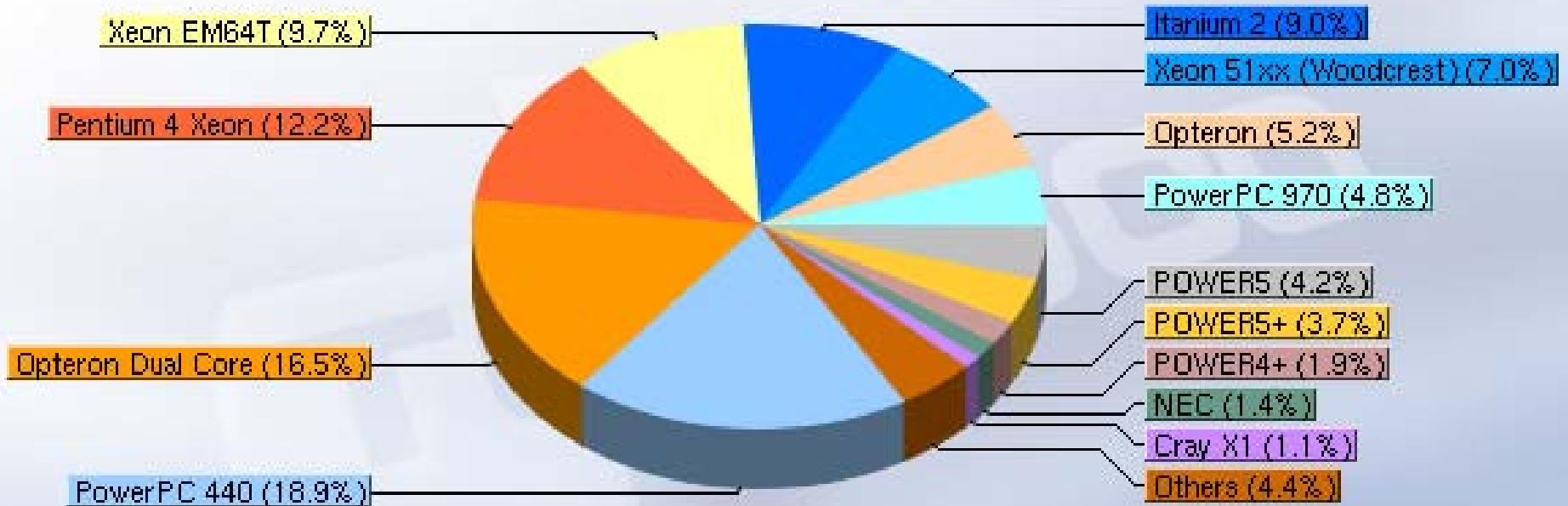
# Concurrency Levels

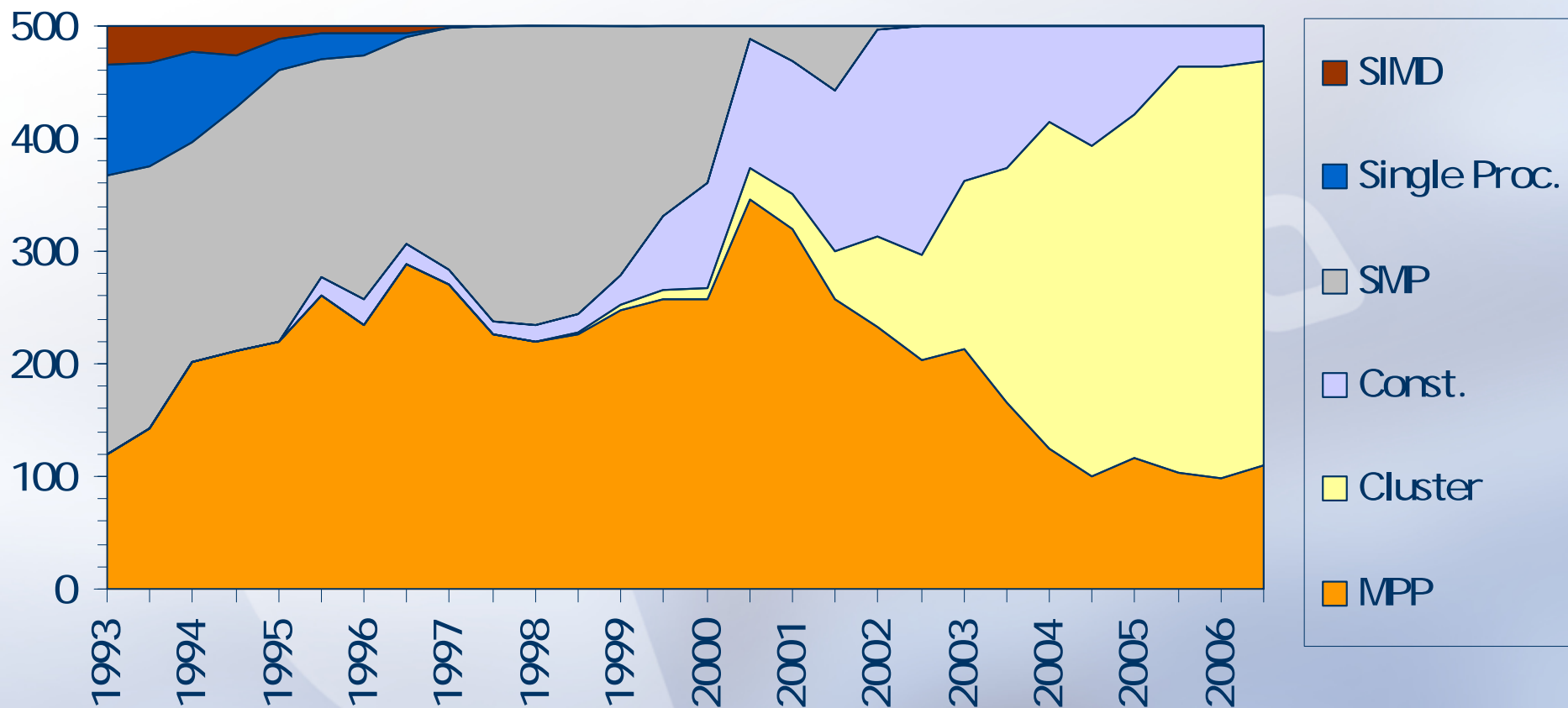


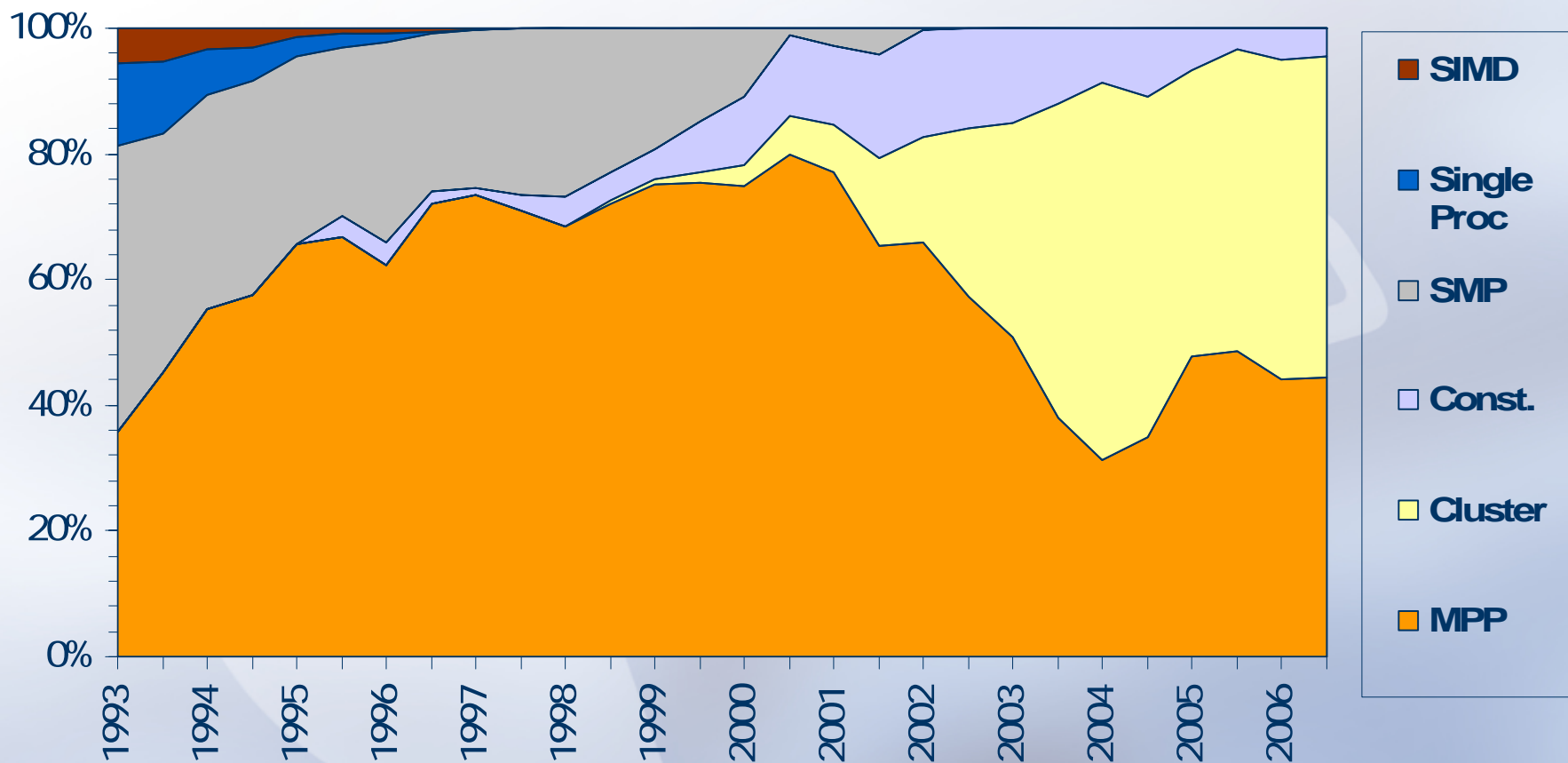
# Processor Types

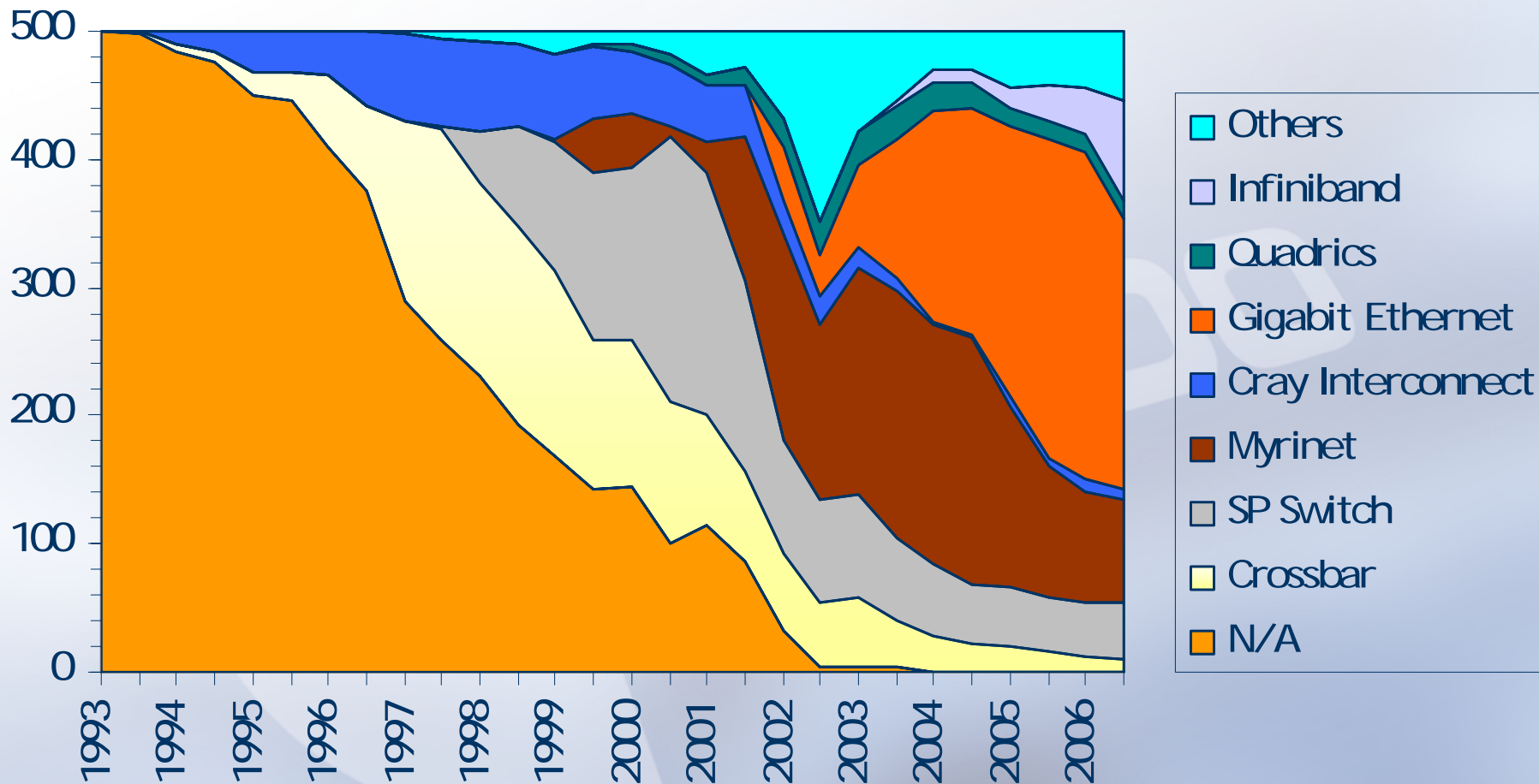


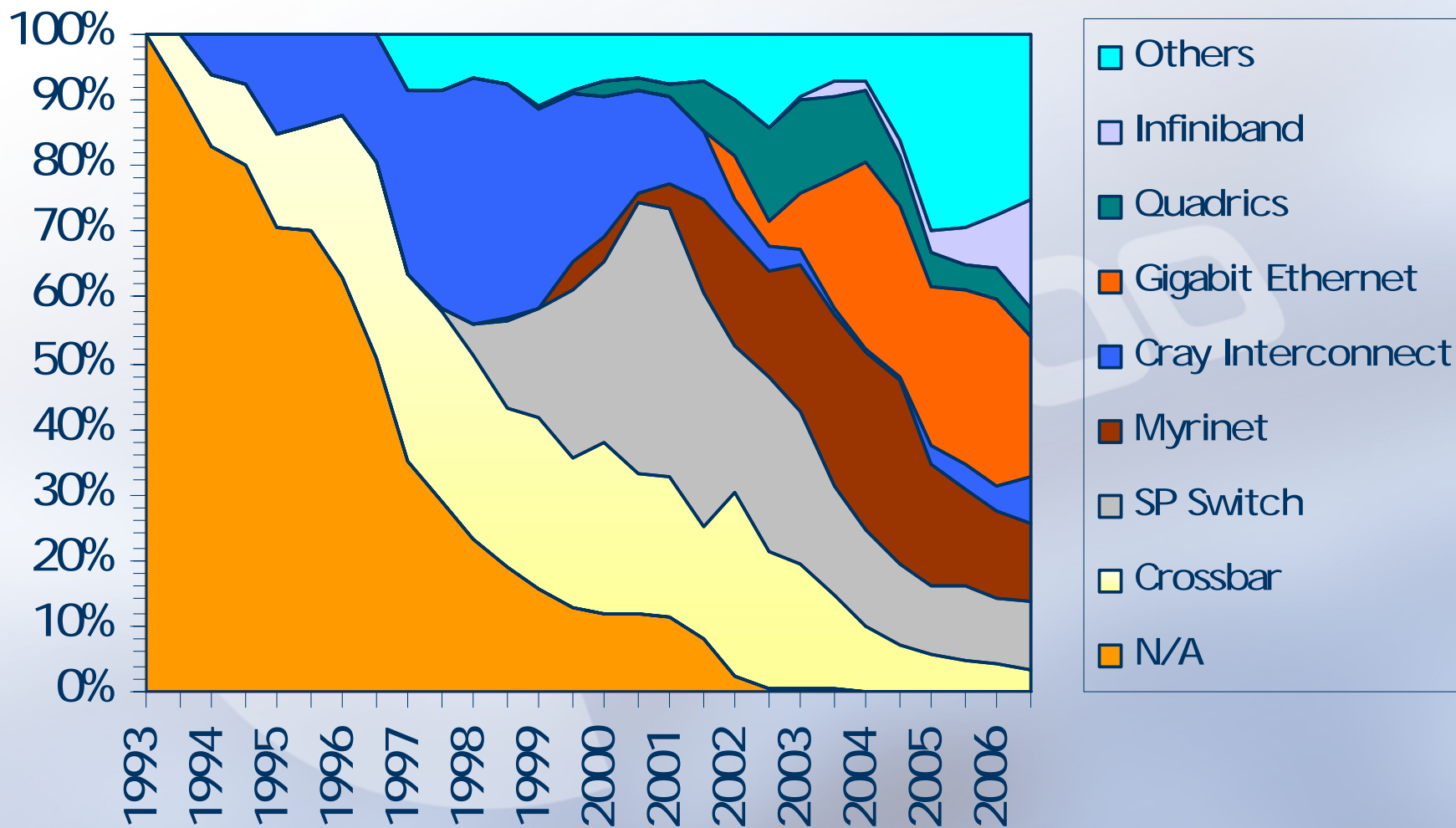


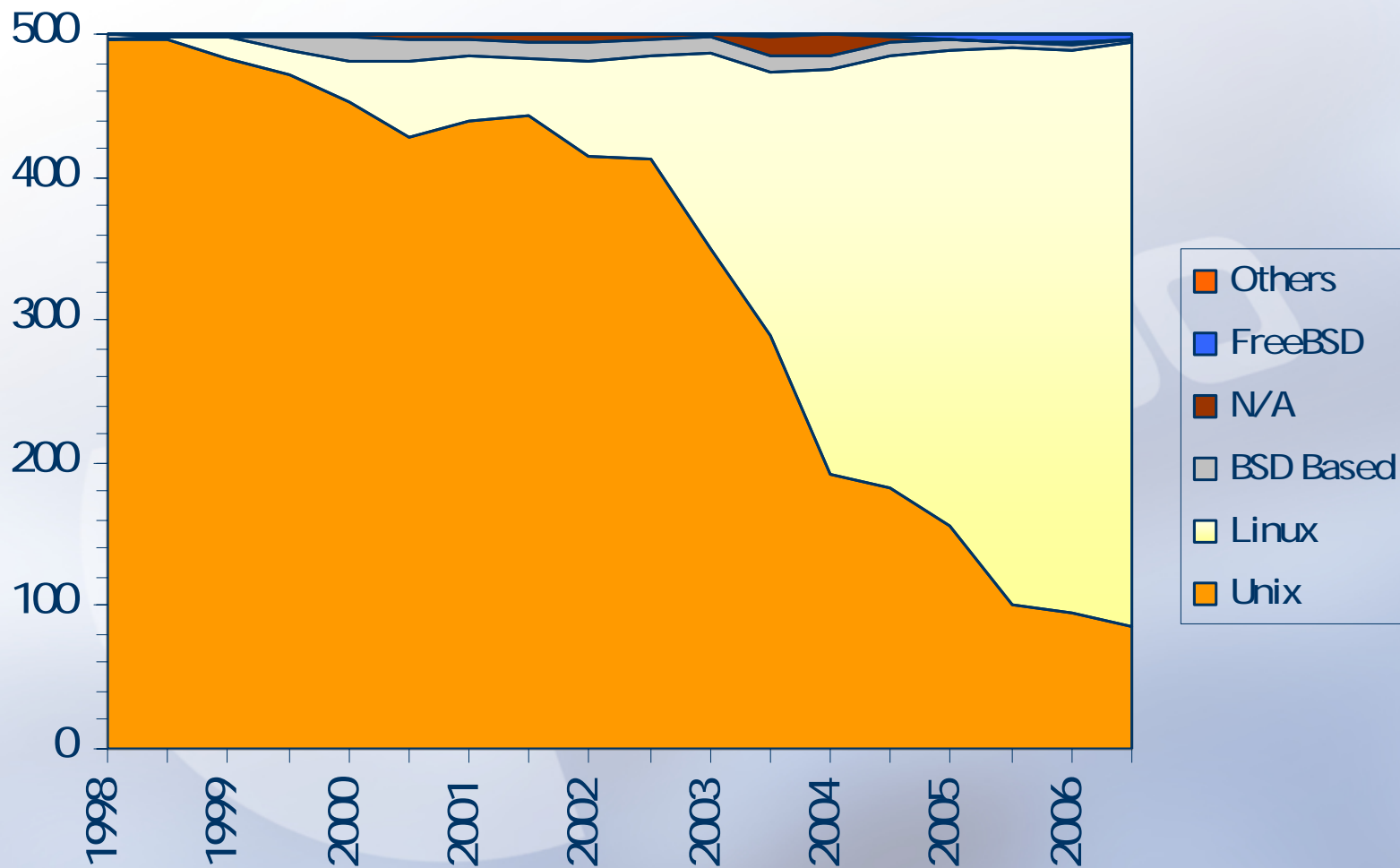


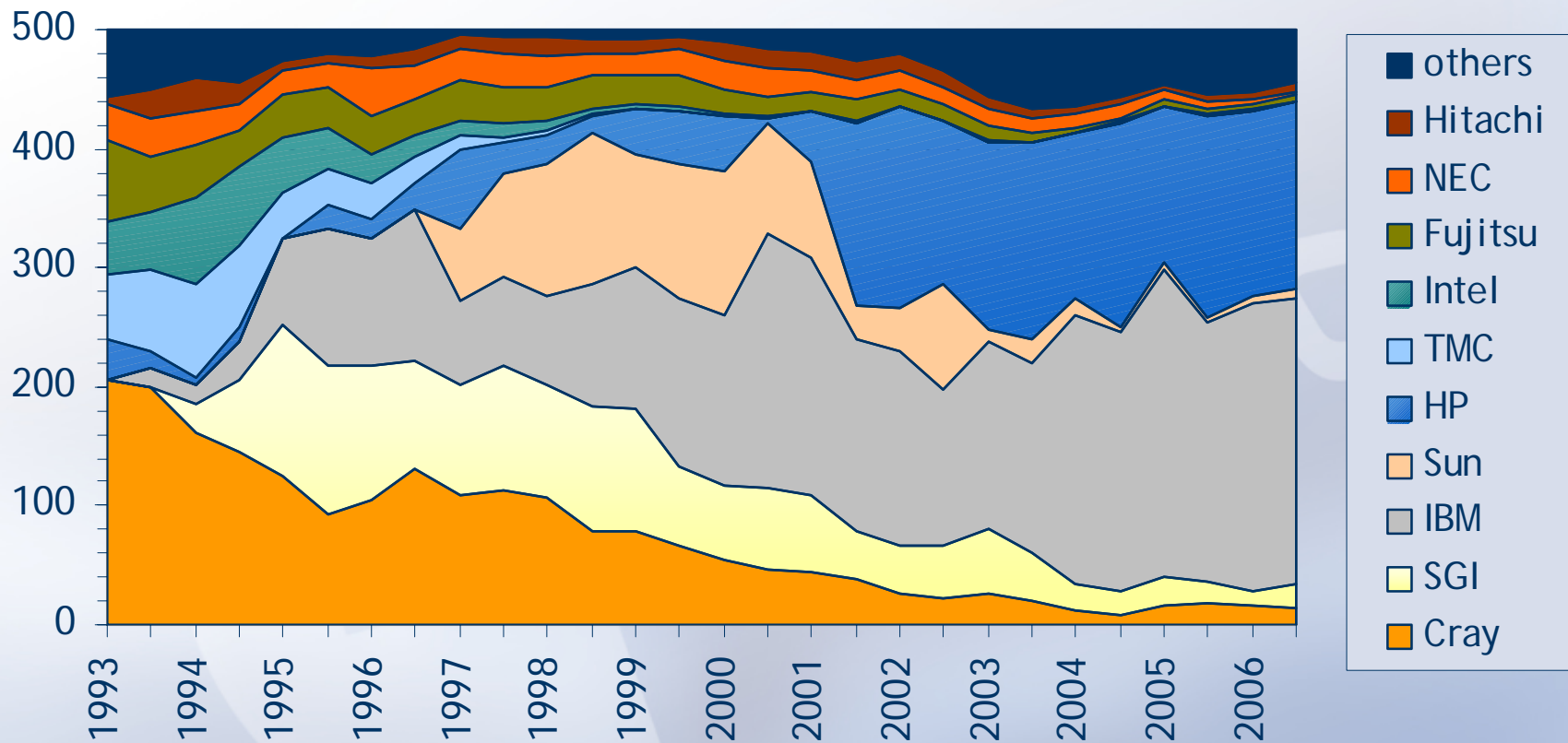






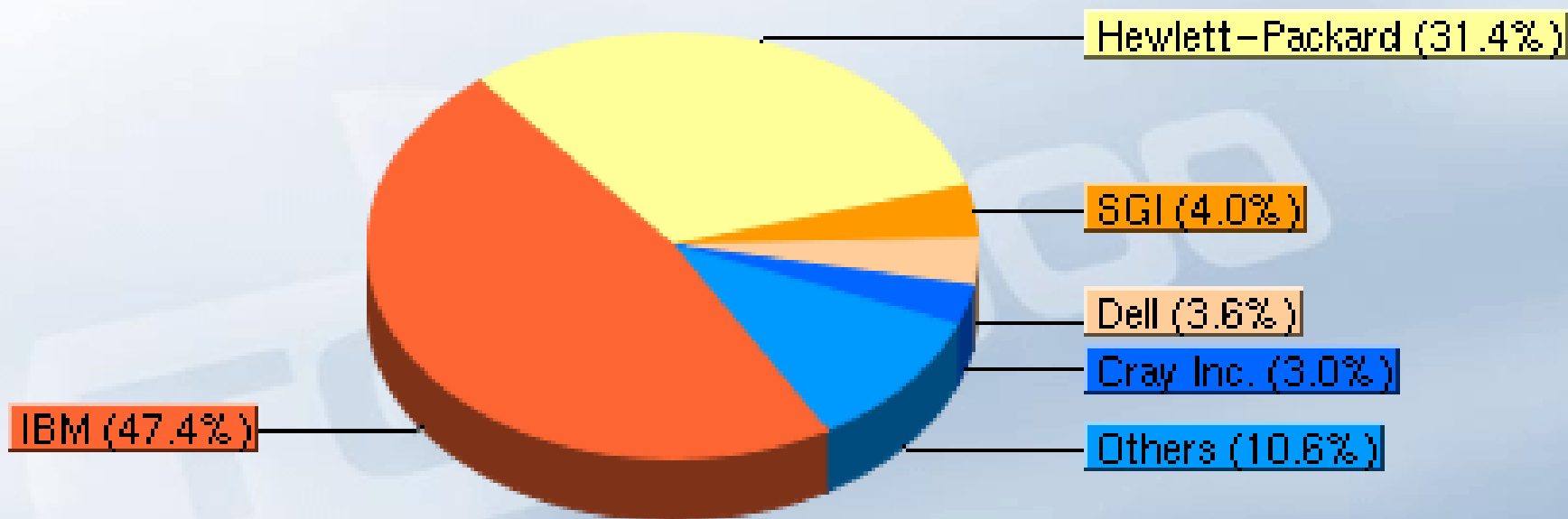


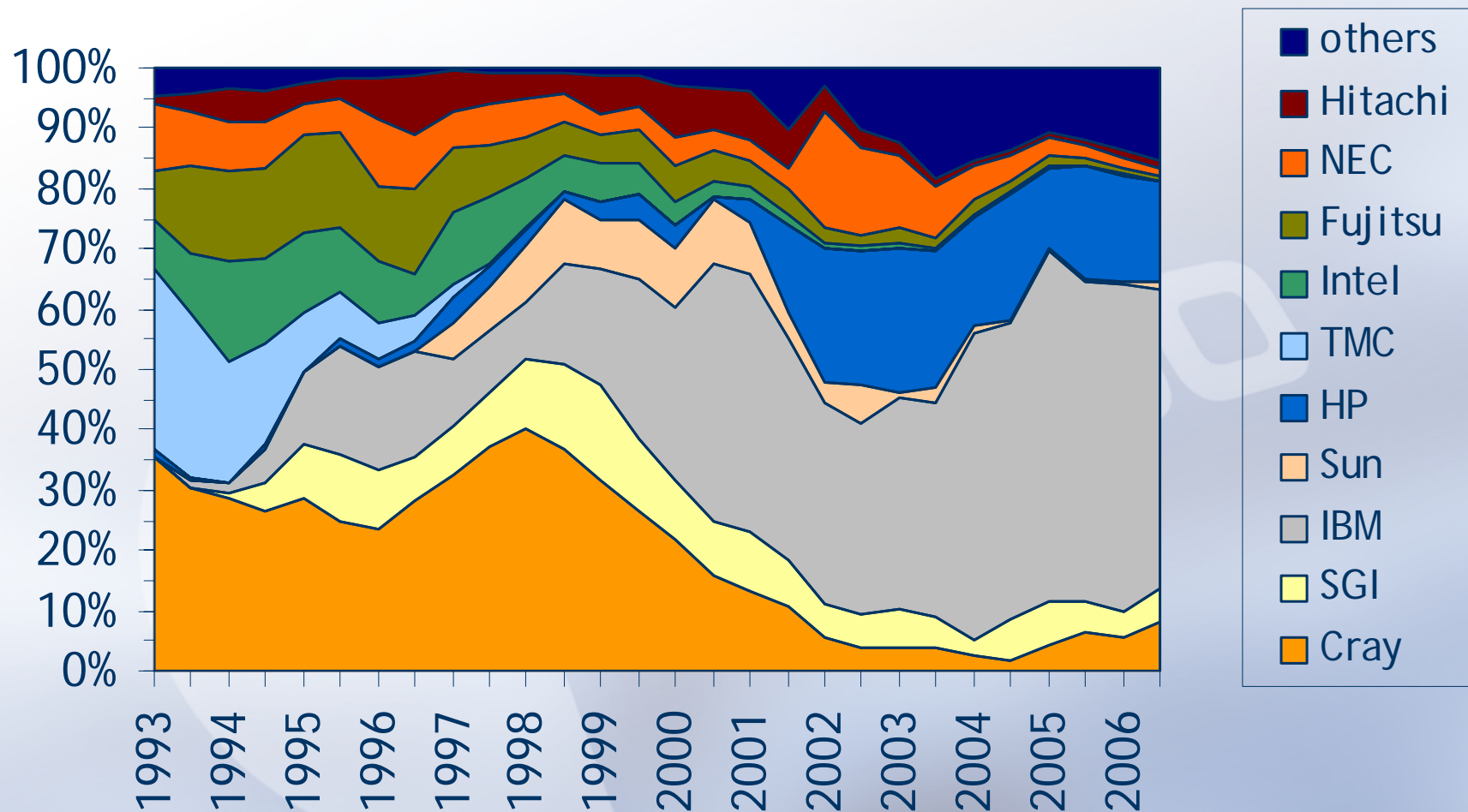




# Manufacturer / Systems

November 2006





# Manufacturer / Performance

November 2006

Hewlett-Packard (16.4%)

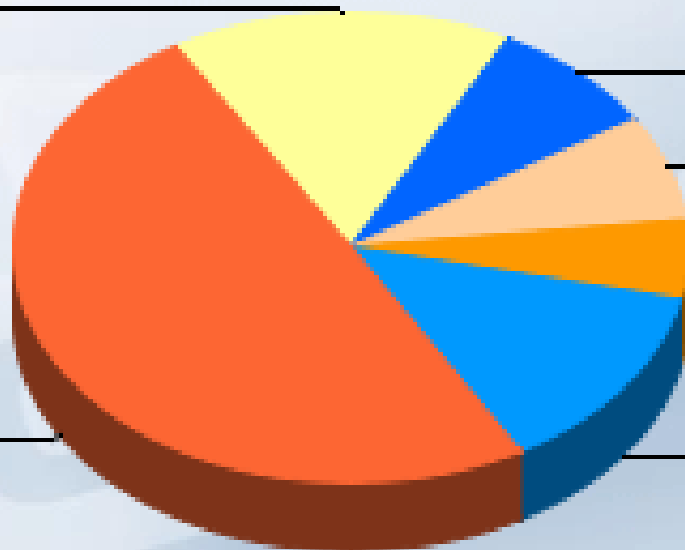
Cray Inc. (8.2%)

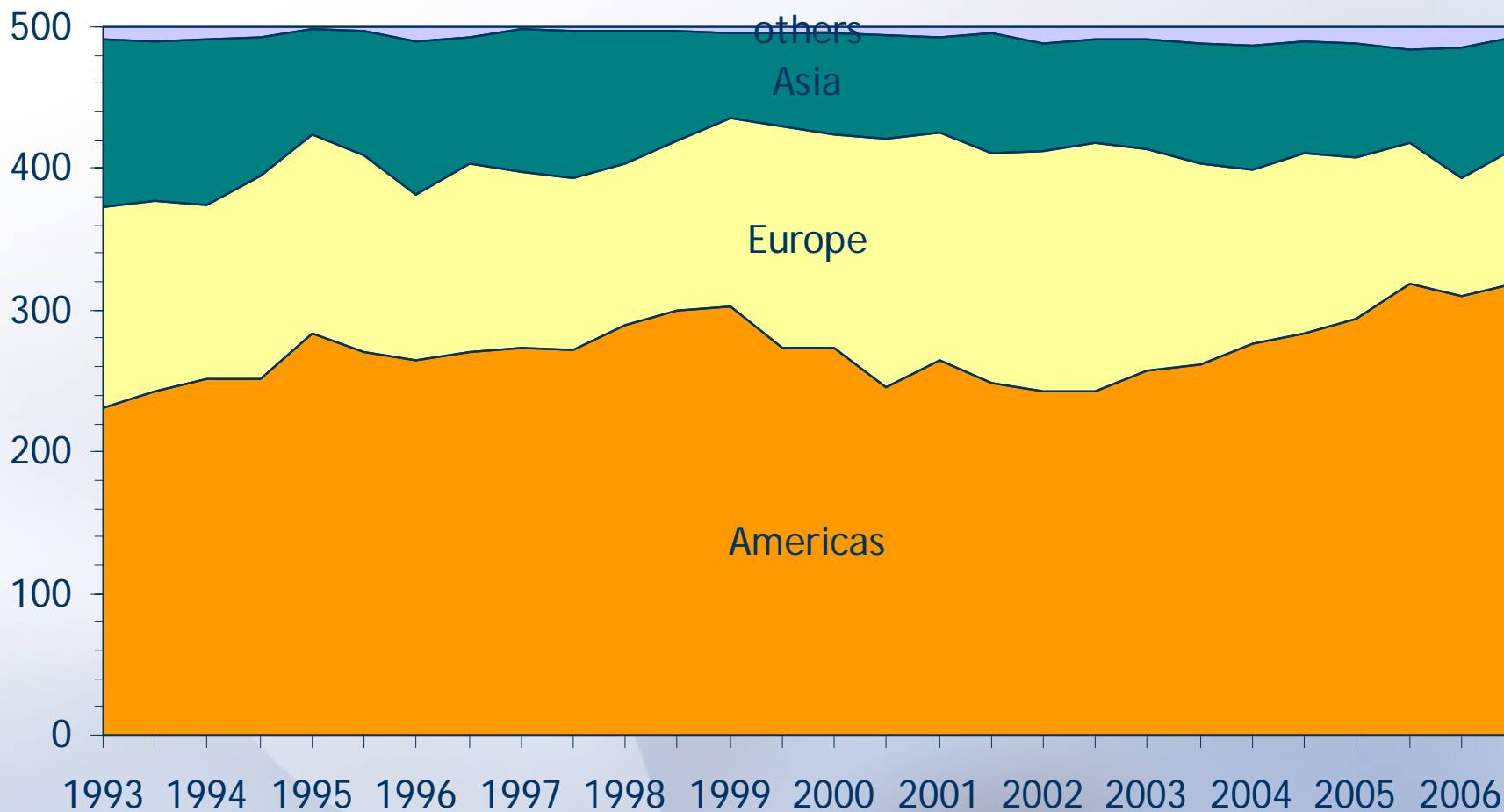
Dell (7.3%)

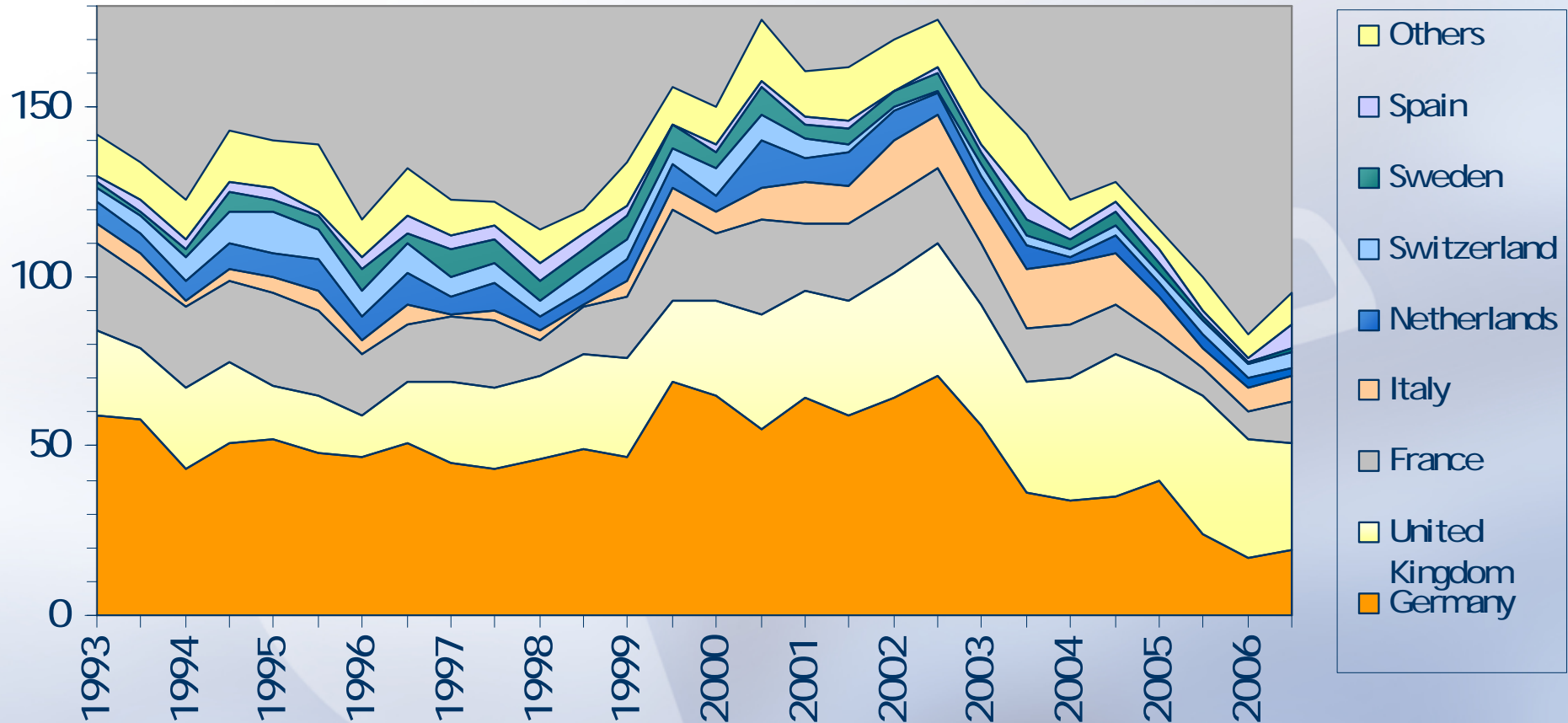
SGI (5.4%)

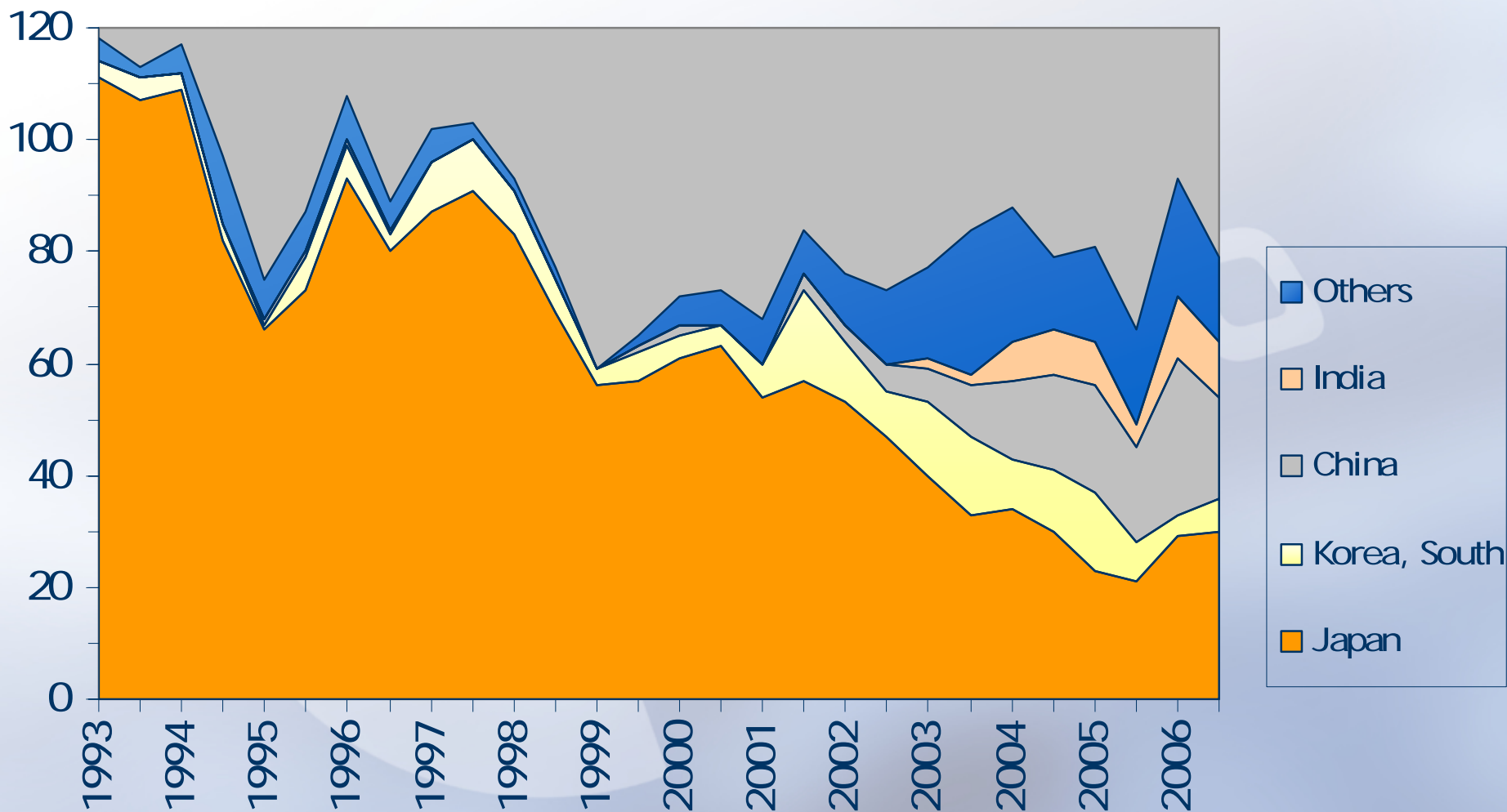
IBM (49.6%)

Others (13.1%)









# Producing Regions / Systems

